

Using WIFI at South Dublin County Libraries February 2011

Our branches are wifi enabled.

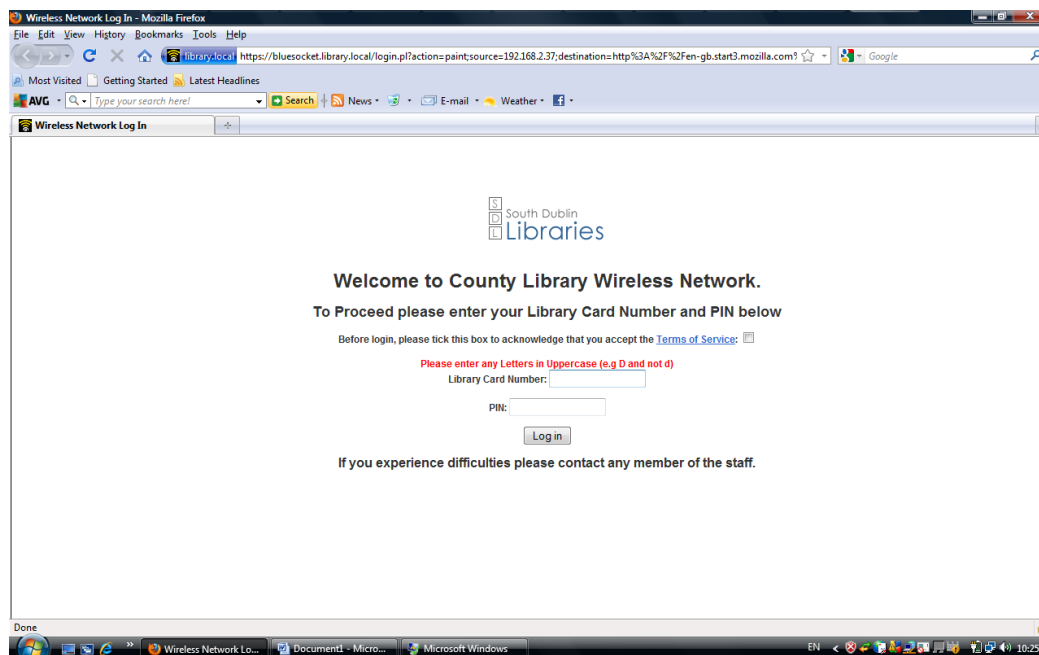
It is a simple process to use the wifi facility in conjunction with your laptop, netbook or mobile device.

The first requirement is that your device be wifi enabled.

You will need your South Dublin Libraries card and PIN

Access the internet in the usual way

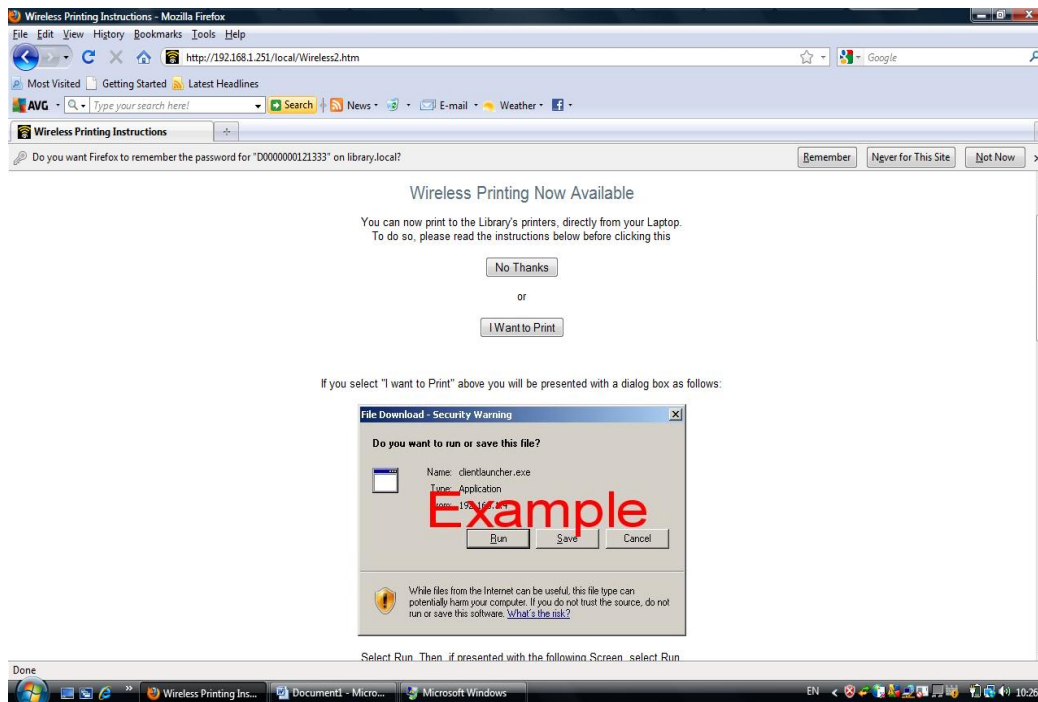
You will see a screen like this.



Type in your 14 digit card number, the 4 digit PIN and remember to tick the box to agree to terms of service.

The next screen will allow you to choose to enable wifi printing. If you choose the options **I want to print** then a small piece of software will be loaded to your laptop for that wifi session. This will allow you to print documents wirelessly on the library's networked printer.

Follow the on screen instructions.



You will then be connected to the internet.

If you choose **no thanks** to the option for wireless printing, you will then be connected to the internet.

*** If you are using Windows Vista, you may need to deactivate UAC (User Account Control) to enable wireless printing.

***Mac laptops may have difficulty reading the .exe file required to enable printing.

*** You may not be able to connect to a work VPN due to our security settings.